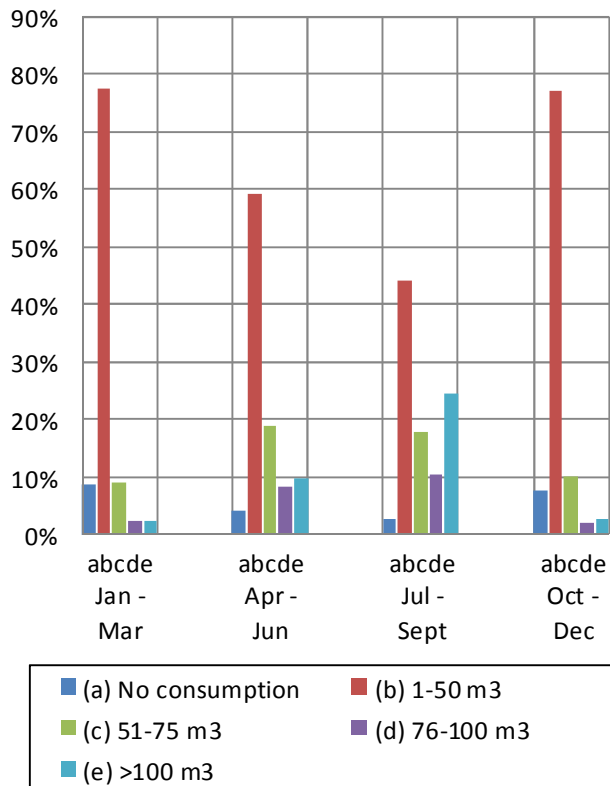


The Pipeline

Issue #28

November 2011

2010/2011 Water Consumption (Percentage of users meeting specific consumptions)



(Colour version of chart is available on the website)

Drips & Drops

- ◆ In the case of a **power outage** we ask that you keep your water consumption to a minimum. Excessive water consumption during a power outage could draw down our reservoir, limiting our capabilities to deal with emergency water demands including fire protection.
- ◆ Have you visited our **website** lately? There is a wealth of information available including: water test results, meeting minutes, financial reports, AGM reports and more! Check it out next time you are browsing: www.dbid.ca
- ◆ **2012 Budgets** for Waterworks and Fire Protection have now been approved. Copies of the operating budgets and capital plans are available on the website and at the office.
- ◆ **Heading South?** Please remember to arrange payment for your Quarterly Water Tolls and Annual Parcel and Fire Protection invoices that will be mailed out in early January. Pre Authorized Payment (PAP) plans can be set up for any financial institution.

PAYMENT OPTIONS:

- ◆ **Pre Authorized Payment (PAP) Plan** - applications available from the office and on the website. **PAP Plan is available for all financial institutions.**
- ◆ **On-line/Telephone banking** - set up for most financial institutions (not available for RBC or TD).
- ◆ **Cheque or Cash** - in person at the office. Cheques can also be mailed - please do not mail cash.

Current Water Tolls

(In effect since January 2011)

Quarterly base rate: \$33 (includes no consumption)

First 50 cubic meters: \$.50/cubic meter

Next 50 cubic meters: \$.60/cubic meter

Remaining Consumption over 100 cubic meters: \$1.00/cubic meter

2012 Parcel & Fire Protection Taxes

There has been no increase to the Parcel and Fire Protection taxes for 2012

Taxes are as follows:

Classification*	Parcel Tax	Fire Protection Tax	Total Taxes
A (residential)	\$118	\$244	\$362
B1	\$133	\$249	\$382
B2	\$133	\$1379	\$1512
C	\$333	\$579	\$912
D1	\$733	\$829	\$1562
D2	\$733	\$2079	\$2812

*The majority of properties in the district are residential and fall into Classification A

(For full definitions of the property classifications, please refer to the reverse side of your Assessment Notice.)

2012 Parcel & Fire Protection Taxes invoices will be mailed out in January with the Quarterly Water Tolls invoice. Taxes are due by February 28th. If you are going to be away, please remember to arrange payment to avoid a late penalty being applied to your account.



Assessment Notices

Enclosed in this mailing is your Annual Assessment Notice. The DBID is required, under Sec. 754 of the *Local Government Act*, to send this notice annually to inform property owners of how their land is being assessed by the district. On the reverse of the notice is a copy of the classifications bylaw that explains what the different groups are. ***This notice is for your information only and does not require any action on your part unless you disagree with how your property has been grouped.***

UPCOMING MEETINGS:

REGULAR BOARD MEETINGS:

DECEMBER 21, 2011

JANUARY 18, 2012

FEBRUARY 15, 2012

LOCATION: 5031 MOUNTAINVIEW ROAD (DEEP BAY FIRE HALL)

TIME: 7:00 PM - PUBLIC IS WELCOME

Regular board meetings are held the 3rd Wednesday of each month unless otherwise noted. Meeting dates can be confirmed at the office and on the website.

CONTACT US:

DEEP BAY IMPROVEMENT DISTRICT

5031 MOUNTAINVIEW ROAD

BOWSER, BC V0R 1G0

PHONE/FAX: 250.757.9312

EMAIL: admin@dbid.ca

OFFICE HOURS: 9:00 AM - NOON MONDAY TO FRIDAY

WEBSITE: www.dbid.ca

Fire Department News

Annual Food Drive: Saturday, November 26th, 10 am – 3 pm

Deep Bay Volunteer Fire Department members will be going door-to-door in our area collecting **non-perishable** food items on behalf of the **Bowser Legion Ladies' Auxiliary** for their **Christmas Hamper Project**.



Any cheques should be made payable to "Ladies' Auxiliary, Royal Canadian Legion, Bowser".

Thank you in advance for your generous contributions for those less fortunate.